

**SPORT-TEK®**

# Sport-Tek® Long Sleeve Digi Camo Tee. ST460LS

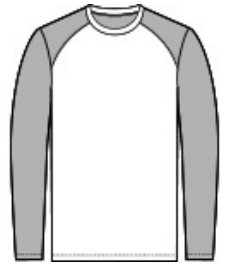


A subtle digi camo pattern gives this moisture-wicking, breathable performance tee a unique edge.

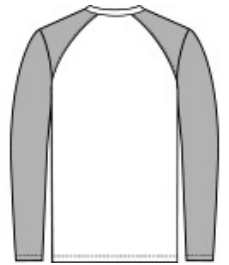
- 3.8-ounce, 100% polyester interlock with sublimated digi camo print
- Removable tag for comfort and relabeling
- Digi camo print on sleeves

### CARE INSTRUCTIONS

Machine wash cold with like colors. Do not use fabric softener. Do not bleach. Tumble dry low. Remove promptly. Cool iron if needed. Do not dry clean.



front



back

### HOW TO MEASURE



#### CHEST WIDTH

Measure under the arm and around the fullest part of the chest with arms down, keeping tape horizontal.

### SIZE CHART

	XS	S	M	L	XL	2XL	3XL	4XL
Chest	32-34	35-37	38-40	41-43	44-46	47-49	50-53	54-57

### COLOR INFORMATION

Please note: PMS code information is shown only when an exact match is available.



Black  
PMS BLACK C



Grey Concrete  
PMS COOL GRAY  
10C



Olive Drab Green  
PMS 7771C



Royal  
PMS 7686C



True Navy  
PMS 533C



True Red  
PMS 200C



True Royal  
PMS 7687C



White