



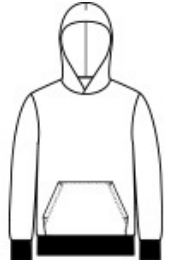
This throw back look is colorful and comfortable. This sweatshirt is created with a prepared-for-dye blank and hand dyed for a vibrant look.

- 7.8-ounce, 80/20 cotton/poly fleece
- Two-ply hood
- No draw cord at hood
- Front pouch pocket

The tie-dye process infuses each garment with unique character. Please allow for slight color variation.

CARE INSTRUCTIONS

Machine wash cold, inside out with like colors, only non-chlorine bleach when needed. Tumble dry medium. Do not iron.



front



back

HOW TO MEASURE



CHEST WIDTH

Measure under the arm and around the fullest part of the chest with arms down, keeping tape horizontal.

SIZE CHART

	XS	S	M	L	XL
Size	4	6/8	10/12	14/16	18/20
Chest	25-26	26-28	28-30	30-32	32-35

COLOR INFORMATION



Black
PMS BLACK C



Kelly
PMS 340C



Navy
PMS 2380C



Neon Rainbow
PMS NO MATCH



Pink
PMS NO MATCH



Purple
PMS 7627C



Rainbow
PMS NO MATCH



Royal
PMS 2133C



Turquoise
PMS 7704C