

PORT AUTHORITY

Port Authority® Hybrid Soft Shell Jacket. J787



Quilted front and back panels join a wind-resistant, water-resistant soft shell to make the Hybrid a trend-right stretch performance jacket with urban edge.

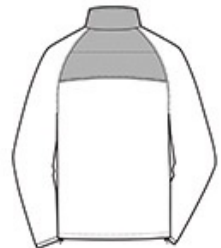
- 100% polyester knit shell bonded to a water-resistant film insert and a 100% polyester microfleece lining
- 100% nylon woven overlays
- 1000MM fabric waterproof rating
- 1000G/M² fabric breathability rating
-
- Reverse coil zippers
- Interior storm flap with chin guard
- Zippered right chest pocket
- Front zippered pockets
- Port Pocket™ for decoration access
- Binding at cuffs
- Open hem with adjustable locking draw cords

CARE INSTRUCTIONS

Machine wash cold with like colors. Do not bleach or use fabric softener. Tumble dry low. Remove promptly. Do not iron. Do not dry clean.



front



back

HOW TO MEASURE



CHEST WIDTH

Measure under the arm and around the fullest part of the chest with arms down, keeping tape horizontal.

SIZE CHART

	XS	S	M	L	XL	2XL	3XL	4XL
Chest	32-34	35-37	38-40	41-43	44-46	47-49	50-53	54-57

COLOR INFORMATION

Please note: PMS code information is shown only when an exact match is available.



Deep Black
PMS BLACK C



Sky diver Blue/
Grey Steel
PMS 7462 C



Smoke Grey / Grey
Steel
PMS Cool Grey 11
C