

PORT AUTHORITY

Port Authority® Zephyr 1/2-Zip Pullover. J343



This Zephyr style merges wind- and water-resisting performance with a silky smooth hand. This unlined piece is easy to wear over base or thermal layers. Modern sleek details offer instant appeal at a very appealing price.

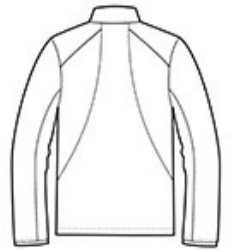
- 100% polyester shell
- Zip-through cadet collar with chin guard
- Set-in sleeves
- Elastic binding at cuffs
- Left side seam zipper for easy on/off
- Open hem with adjustable locking draw cord

CARE INSTRUCTIONS

Machine wash cold with like colors. Do not bleach or use fabric softener. Tumble dry low. Remove promptly. Do not iron. Do not dry clean.



front



back

HOW TO MEASURE



CHEST WIDTH

Measure under the arm and around the fullest part of the chest with arms down, keeping tape horizontal.

SIZE CHART

	XS	S	M	L	XL	2XL	3XL	4XL
Chest	32-34	35-37	38-40	41-43	44-46	47-49	50-53	54-57

COLOR INFORMATION

Please note: PMS code information is shown only when an exact match is available.



Black
PMS BLACK C



Dress Blue Navy
PMS 533C



Grey Steel
PMS 425C