



# Gildan® Heavy Blend™ Open Bottom Sweatpant. 18400

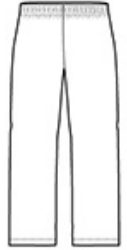


- 8-ounce, 50/50 cotton/poly
- Differential rise for better fit
- Covered elastic waistband with draw cord
- side seamed
- Slightly tapered leg with open bottom
- Double-needle bottom hem
- Recycled, high-performing black tear-away label

Please note: This product is transitioning from tear-away labels to recycled, high-performing black tear-away labels. Your order may contain a combination of both labels.

### CARE INSTRUCTIONS

Machine wash warm, inside out, with like colors. Only non-chlorine bleach. Tumble dry medium. Do not iron if decorated. Do not dry clean.

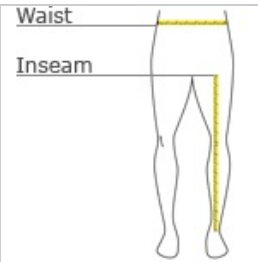


front



back

### HOW TO MEASURE



#### WAIST

Measure around the smallest part of the natural waist.

#### INSEAM

Measure a similar style pant that fits well and is the desired length. Measure from the crotch seam to the hem.

### SIZE CHART

	S	M	L	XL	2XL	3XL
Waist	24-26	28-29	30-31	32-33	36-34	38-40

### COLOR INFORMATION

Please note: PMS code information is shown only when an exact match is available.



Black  
PMS 426C



Navy  
PMS 533C



Sport Grey  
PMS COOL GRAY  
7C

\*Not all sizes are available in every color.